



Introduction to Fiji

Joanna Leng (j.leng@leeds.ac.uk)

EPSRC funded RSE Fellow

What is an RSE?



UNIVERSITY OF LEEDS

- Stands for:

What is an RSE?



UNIVERSITY OF LEEDS

- Stands for:

Research Software Engineer

What is an RSE?



UNIVERSITY OF LEEDS

- Stands for:

Research Software Engineer

- https://en.wikipedia.org/wiki/Research_software_engineering
- **Research software engineering** is the use of software engineering practices in research applications. The term started to be used in United Kingdom in 2012[1][2], when it was needed to define the type of software development needed in research. This focuses on reproducibility, reusability, and accuracy of data analysis and applications created for research.

- RSE Leeds:
- [http://
lists.leeds.ac.uk/mailman/listinfo/rse-network](http://lists.leeds.ac.uk/mailman/listinfo/rse-network)
- Twitter: @RSELeeds
- Women in HPC Leeds hub:
- [http://
lists.leeds.ac.uk/mailman/listinfo/whpc-network](http://lists.leeds.ac.uk/mailman/listinfo/whpc-network)
[k](#)
- Visualisation Network:
- [http://
lists.leeds.ac.uk/mailman/listinfo/visualisation](http://lists.leeds.ac.uk/mailman/listinfo/visualisation)

- The RSE Association
- <http://rse.ac.uk/join-us/>
 - Mailing list, slack channel
 - RSE conference
- Software Sustainability Institute
- <https://www.software.ac.uk/>
 - Mailing list
 - Collaborations Workshop
- Software Carpentry Foundation
- <https://software-carpentry.org/>
 - Mailing list and git repositories

- Tools for scientific image analysis
 - Open Source
 - Anyone can inspect, modify and enhance the software **BUT** you do not have to.
 - Its development is funded by research funders' is free to use.

<https://imagej.net/>

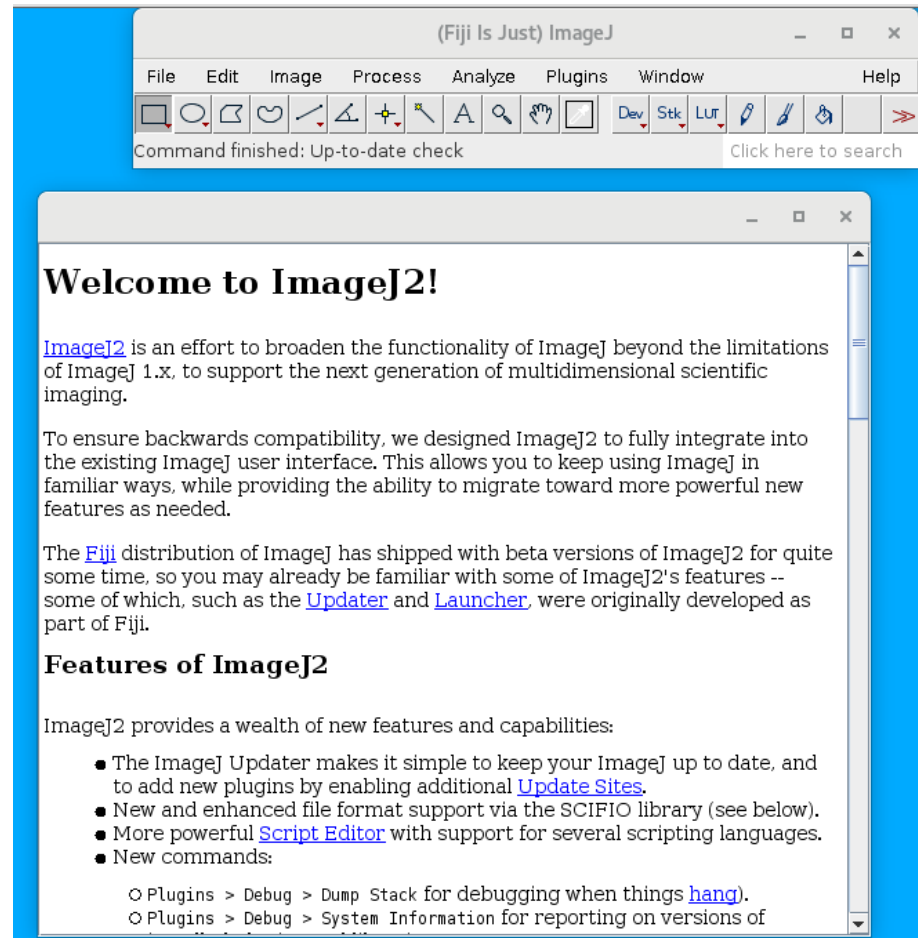
- **Fiji** is a distribution of **ImageJ**
 - It comes with a large number of utilities and plugins so you do not have to install them

<https://fiji.sc/>



- Fiji
 - <https://imagej.net/Fiji>
- Download
 - <https://imagej.net/Fiji/Downloads>
- Learning
 - <https://imagej.net/Introduction>
- Tutorials
 - <https://imagej.net/Category:Tutorials>
- Forums
 - <https://forum.image.sc/>
-

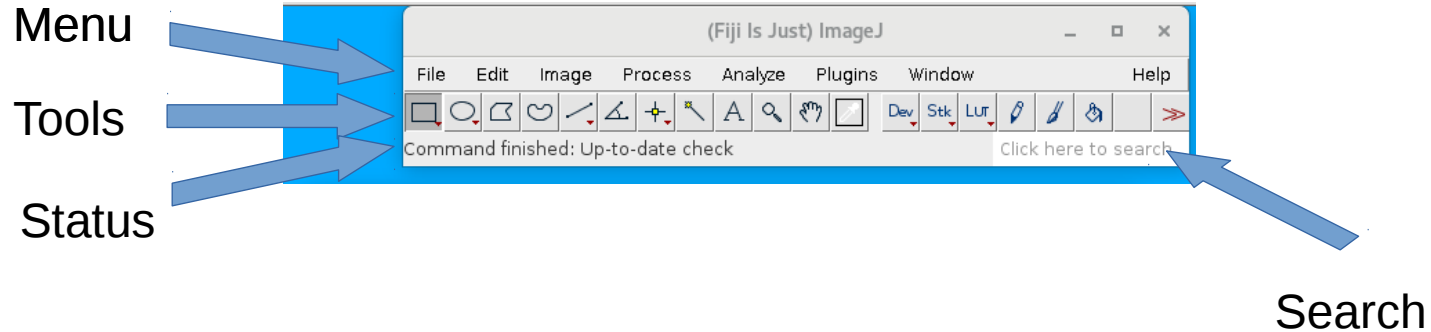
- The main window (yesterday):



The Main Window



UNIVERSITY OF LEEDS



- The main window:

The Menu Bar for Major Functionality



UNIVERSITY OF LEEDS

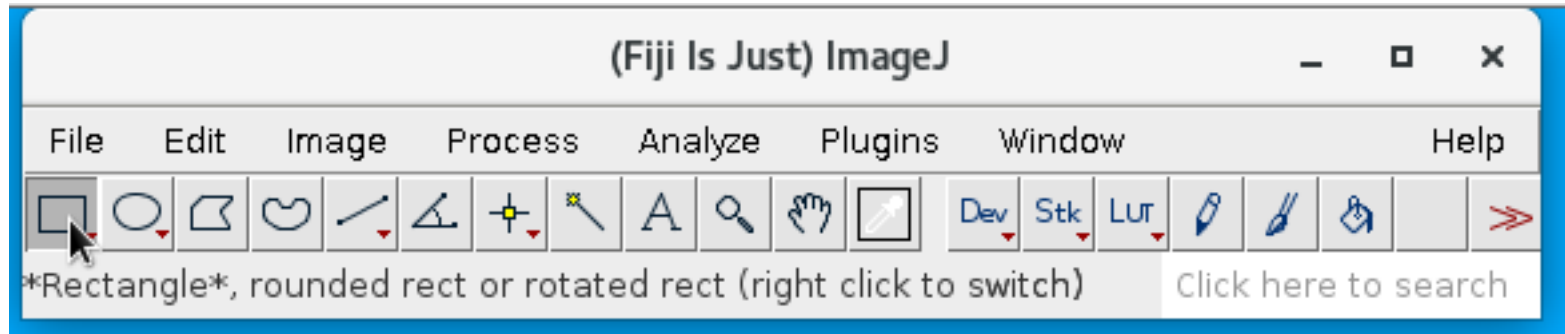
- File
 - File input/output, new files
- Edit
 - Selection/ROI handling
- Image
 - Visualization, stack manipulation
- Process
 - Image filters
- Analyze
 - Statistics
- Plugins
 - Plugins, Macros and Utilities
- Window
 - Windows
- Help
 - Help & Links

Information on Tools

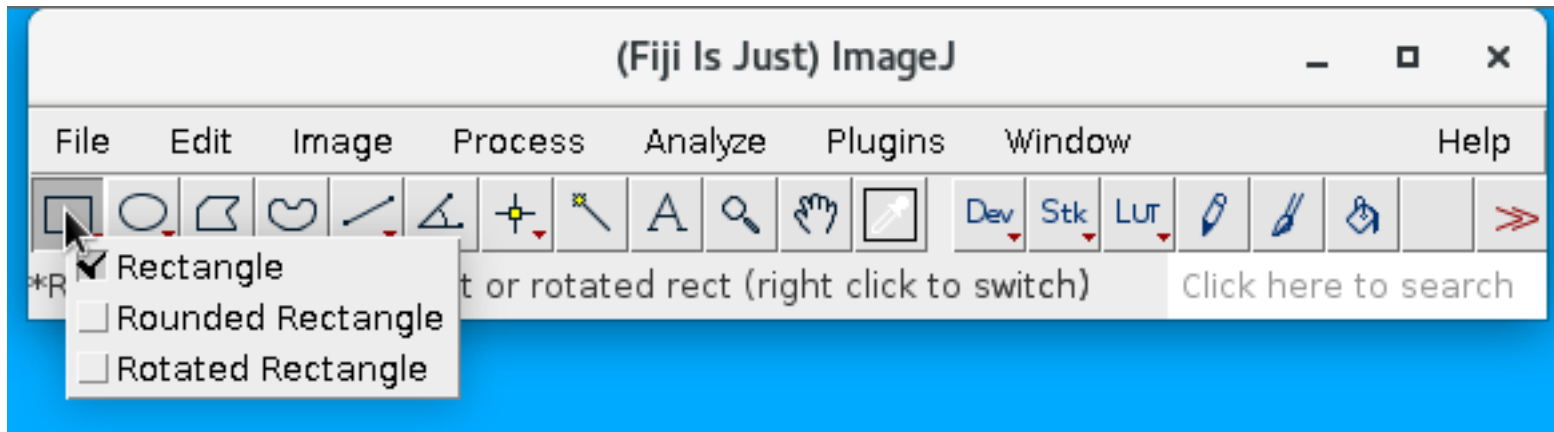


UNIVERSITY OF LEEDS

- Hover the mouse to see info in the status bar

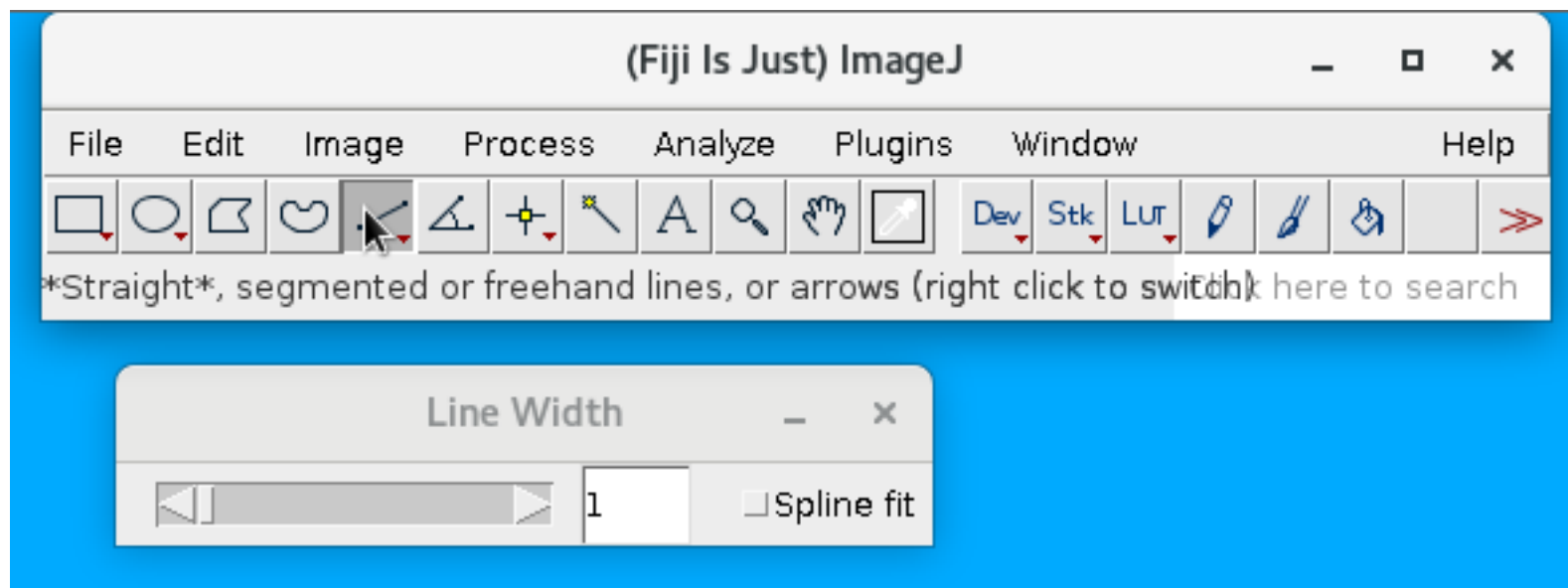


- Right click the mouse to see the drop down menu

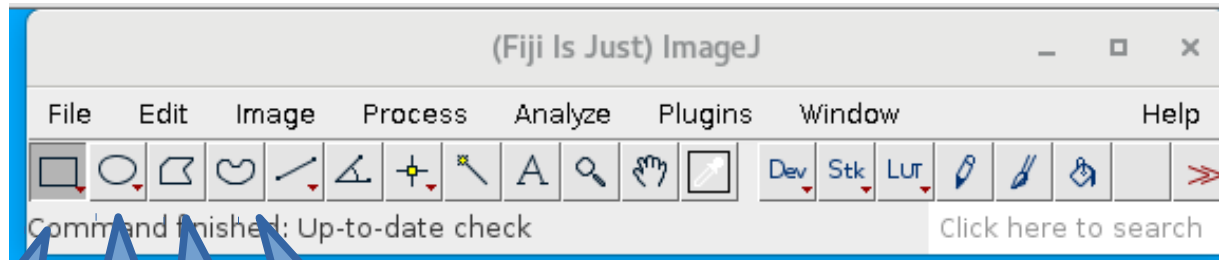


Tools settings

- Double left click to adjust setting for a tool



- Selection Tools



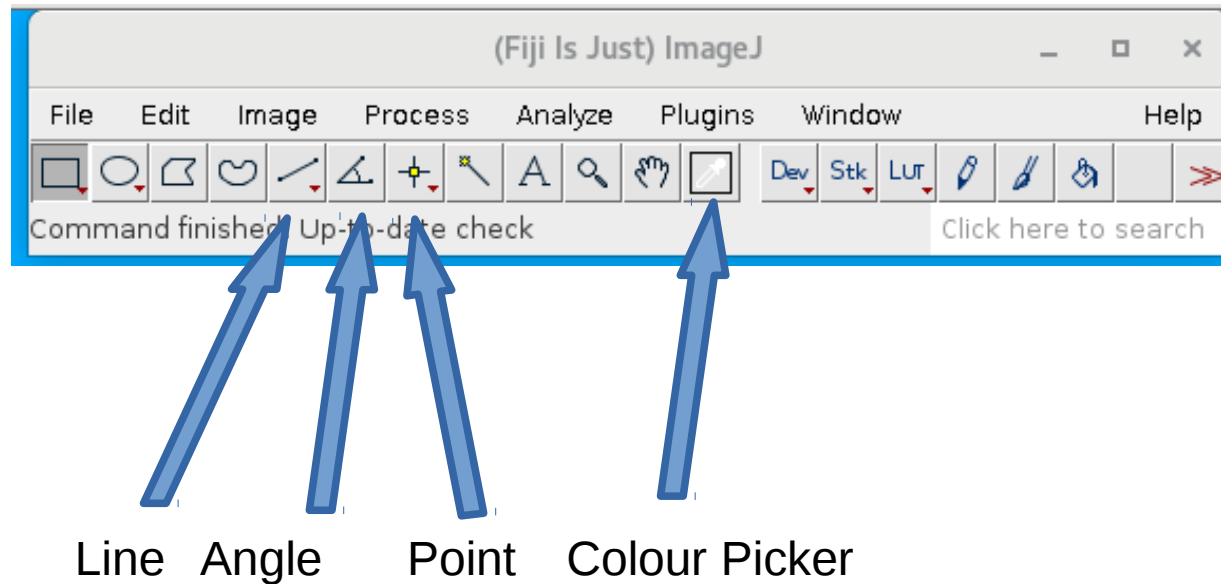
Rectangle

Oval

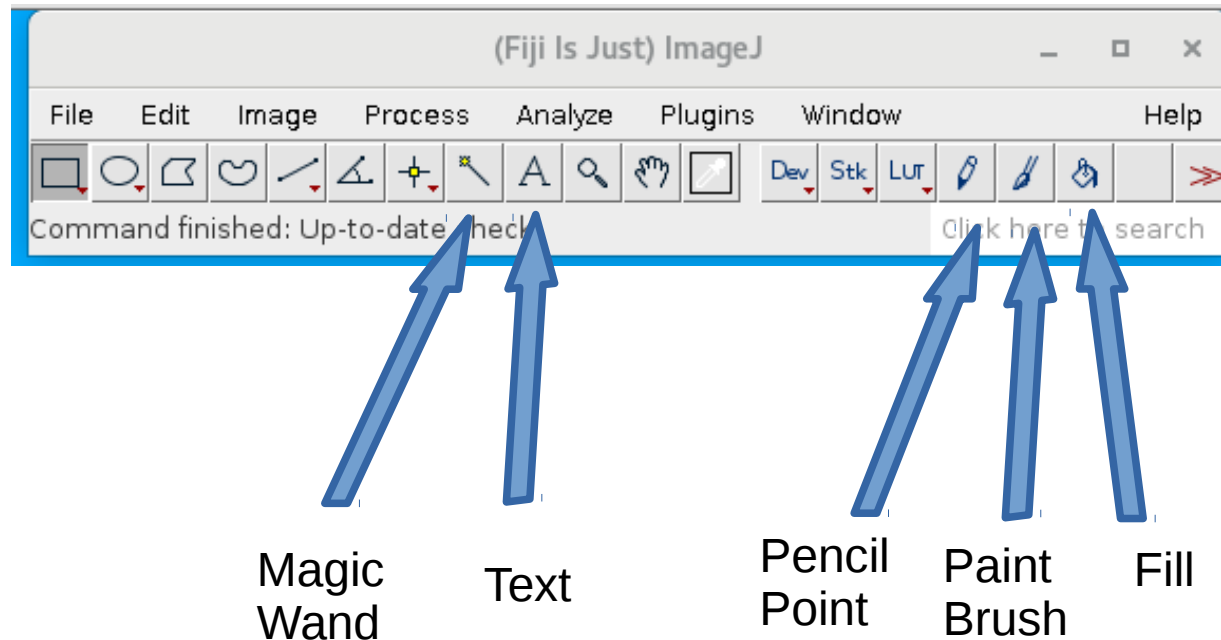
Polygon

Freehand

- Measurement Tools



- Mark and Segment Tools

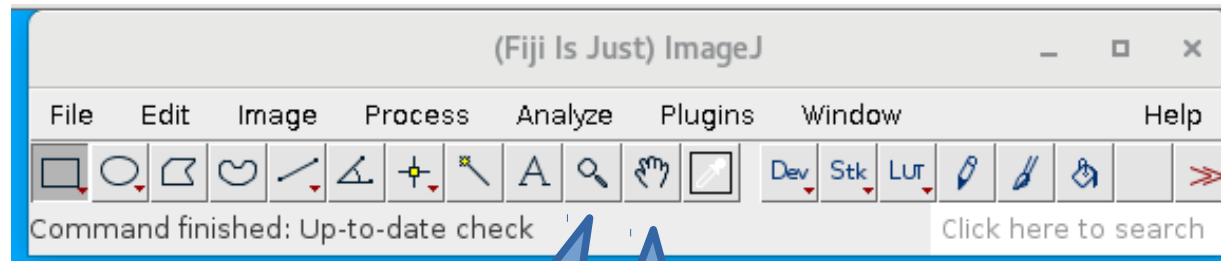


Tools



UNIVERSITY OF LEEDS

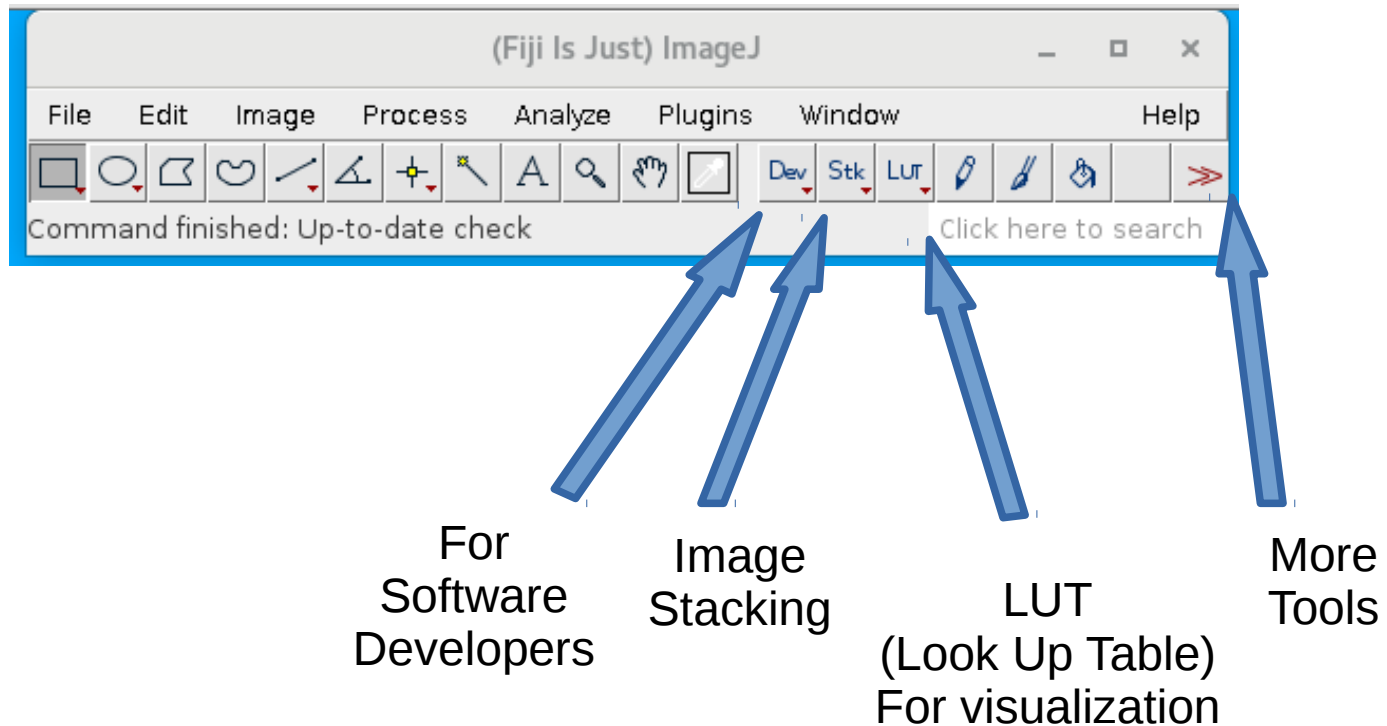
- Ease-of-Use Tools



Magnify
or
Zoom

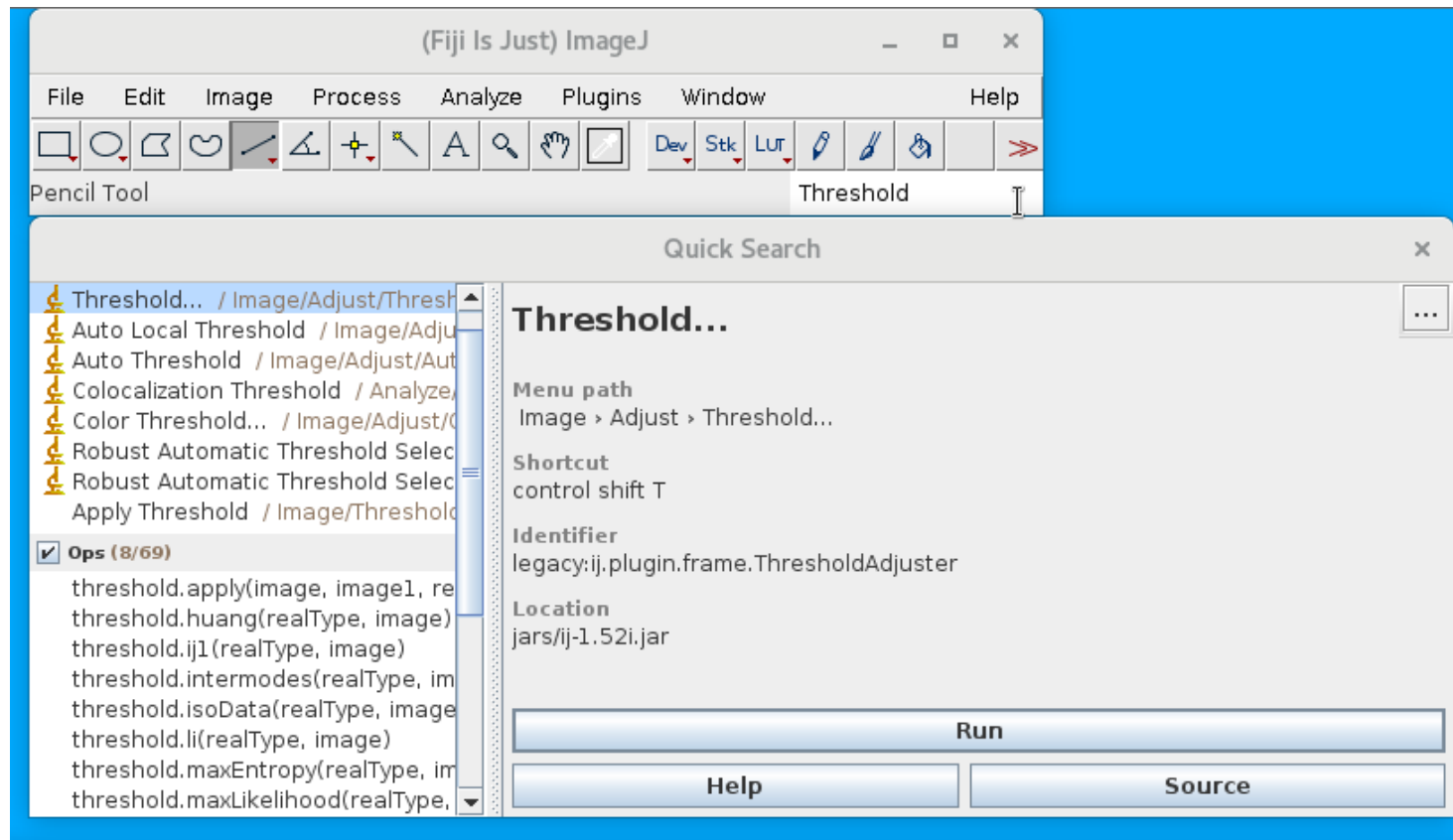
Scrolling

- Advanced Tools



Search bar

- Type into the search bar for information

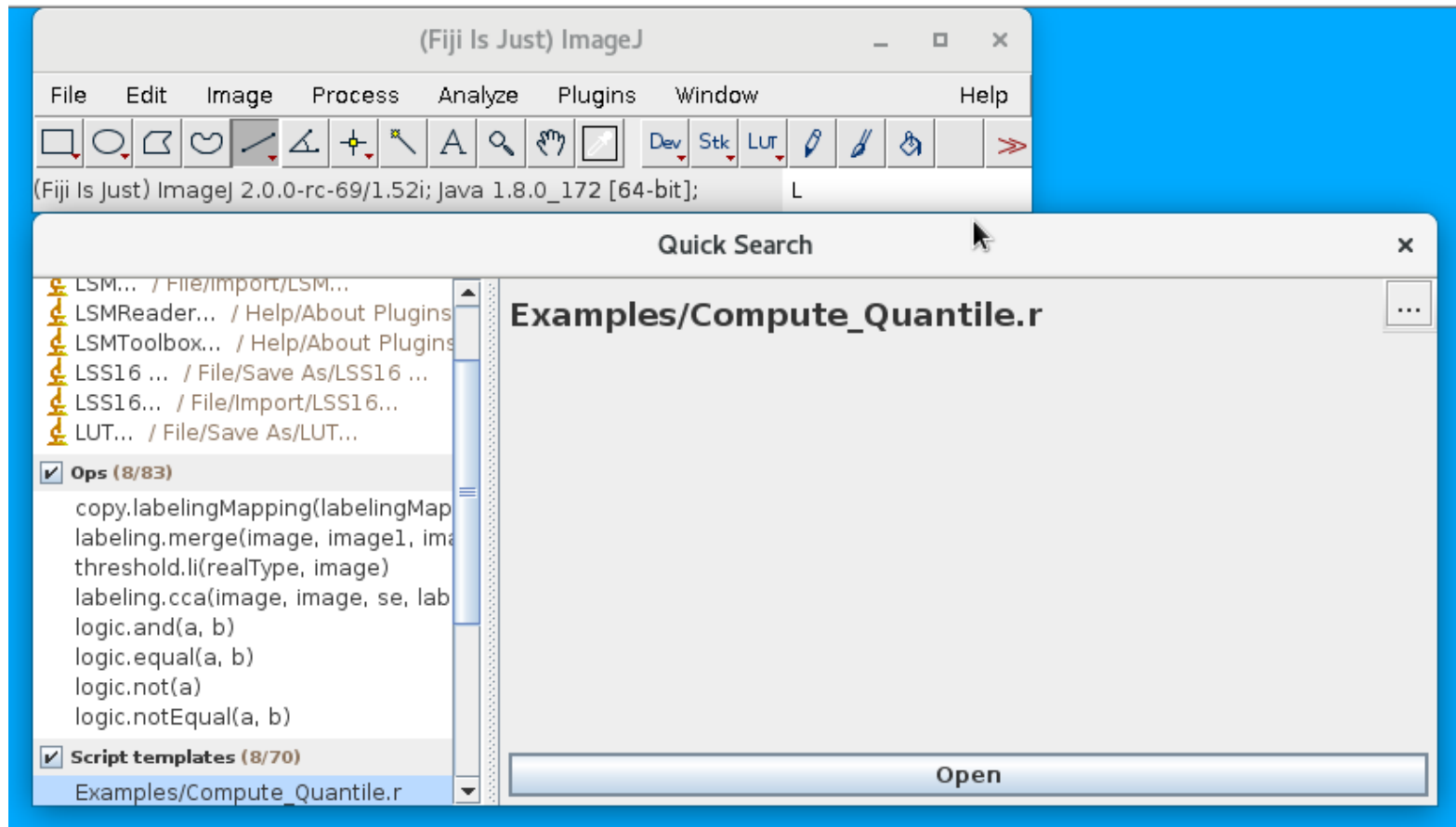


Search bar



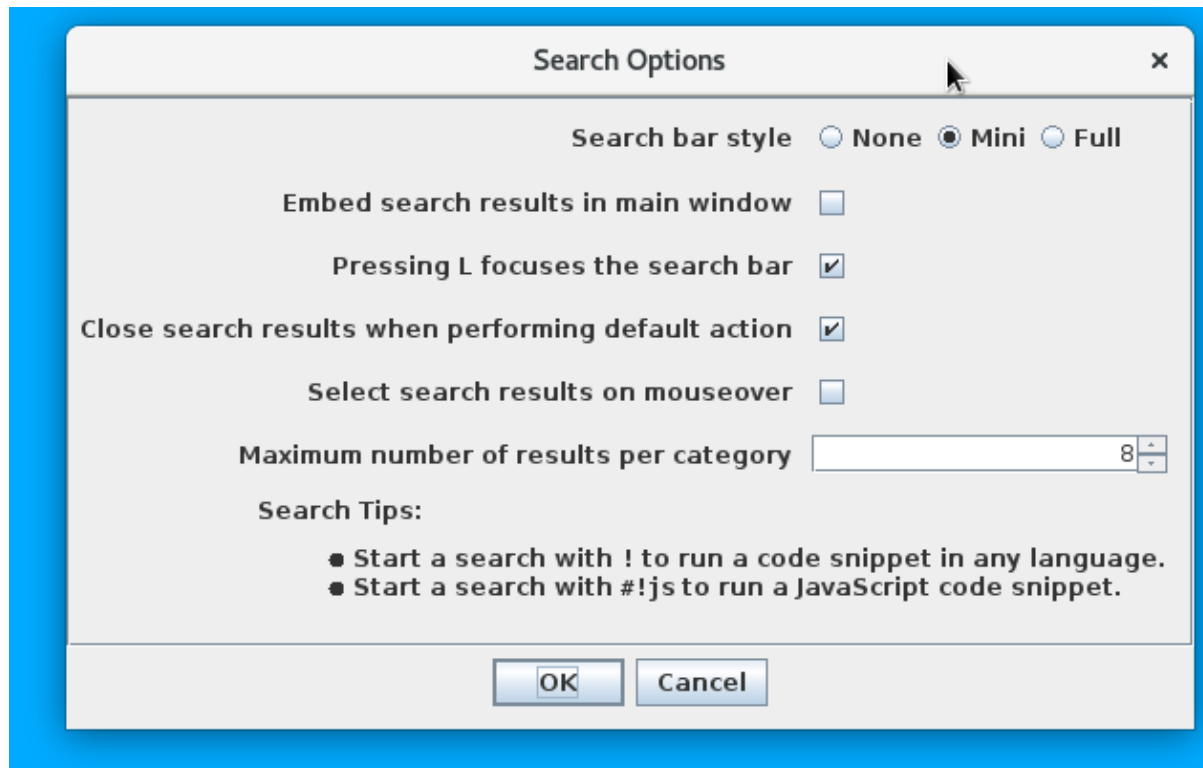
UNIVERSITY OF LEEDS

- Type “L” to get all areas which you can search



Search Bar Settings

- Edit → Options → Search Bar

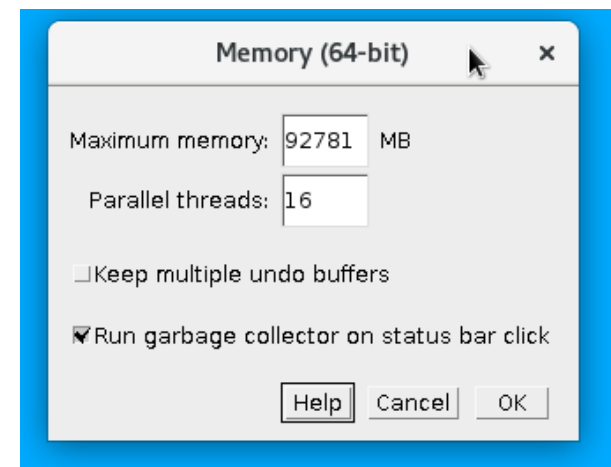
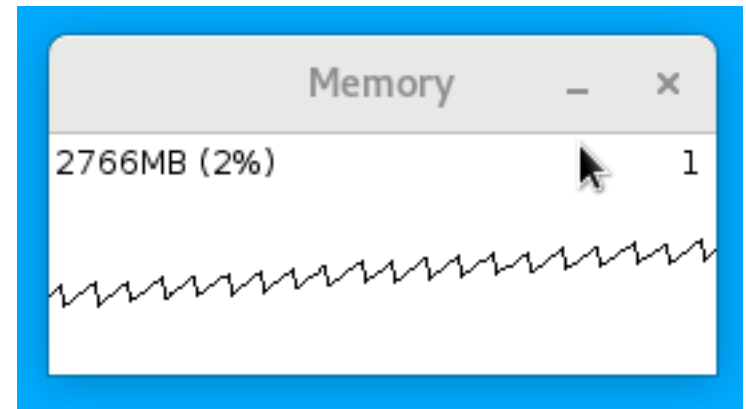


Memory Management



UNIVERSITY OF LEEDS

- Search Bar “Memory”
- Plugins → Utilities → Memory Monitor
- Edit → Options → Memory and Threads



Further Reading



UNIVERSITY OF LEEDS

- Community Help on the Forum:
 - <http://imagej.net/Help>
- ImageJ user guides:
 - http://imagej.net/User_Guides
- A thorough Fiji Tutorial for Beginners:
 - <http://nic.uni-hd.de/analysis.html>
- Additional workshops and presentations:
 - <http://imagej.net/Presentations>